



---Content---

- [About Us](#)
- [Club Officers](#)
- [To Join Our Club](#)
- [Next Meeting](#)
- [Upcoming Events](#)
- [Meet Our Neighbors](#)
- [Mineral of the Month Quiz](#)
- [Interesting Reads](#)

---Contact Us---

Postal Address:

Lake George Gem & Mineral Club
PO Box 171
Lake George, CO 80827

Website:

[LGGMC website](#)
[LGGMC on Facebook](#)

Meeting Location:

Lake George Charter School
38874 Hwy 24
Lake George, CO 80827

[Map to Lake George Community Center](#)

[Map to Lake George Charter School](#)

Lake George Gem & Mineral Club

June 2025

About Us

The Lake George Gem and Mineral Club is a group of people interested in rocks and minerals, fossils, geology and history of the Pikes Peak/South Park area, Indian artifacts, and the great outdoors. The Club's informational programs and field trips provide opportunities to learn about Earth Science, rocks and minerals, fossils, lapidary work, jewelry making, and to share information and experiences with other members. Guests are welcome to attend, to see what we are about!

The Club is geared primarily to amateur collectors and artisans, with programs of interest both to beginners and serious amateurs.

The Club normally meets on the second Saturday of each month at the Lake George Charter School gym, located on the south side of US Highway 24 approaching the town of Lake George from Florissant. A link to a map of the meeting location is provided on the sidebar under "Contact Us". Between Oct – Mar, our meetings start at 10 AM. From Apr-Sep, our meetings start earlier, 9 AM, to allow for more time for any subsequent field trips.

Club Officers

Following are the LGGMC Officers for 2025. Please reach out if you need any help.

President	Dave Bruess	david@bruess.me
Vice President	Bart Zobel	bezobel@gmail.com
Secretary	Steve Kahler	pippophet@gmail.com
Treasurer	Karen Vogl	bigmabe@hotmail.com
Newsletter Editor	Betty Bowles	bbowles2@gmail.com
Field Trip Coordinator	Corey Miller	corythevaulter@gmail.com
Show Coordinator	Carol Kinate	kinatec@aol.com

To Join Our Club – (2025 Annual Membership Applications are being extended through April)

Our organization is incorporated under Colorado law as a nonprofit educational organization, and is a member of the Colorado, Rocky Mountain, and American Federations of Mineralogical Societies. We gather monthly as a club to share information including guest speaker presentations, workshops, and rock specimen show and tell discussions. We coordinate and supervise amazing field trips for club members that cover a broad spectrum of geological, archeological, rock, and mineral interests. We also sponsor the annual Gem and Mineral Show at Lake George, where collectors and others may purchase or sell rocks, minerals, fossils, gems, or jewelry.

Annual Membership Closed

Membership for 2025 is closed at this time. Enrollment will begin for next year on Jan. 1, 2026. Last year's membership list was purged on May 1. Please note that all memberships must be current in order to participate on any field trip or to use any club claim.

How to Apply

The quickest and easiest way for one to join our club is online. Visit [OUR CLUB WEBSITE](#) and follow the "Register" option. If you are already registered and want to pay your membership dues online for 2025, follow the "Login" option. If you have any difficulties with verifying your payment, please contact us.

One may also apply for membership in person at our monthly meetings or by mailing in the application and fee. The application can be downloaded in PDF format from [HERE](#). The application will need to be filled out and submitted to the club along with the appropriate membership dues. The mailing address to submit the application is provided in the newsletter sidebar, ---**Contact Us**--- under **Postal Address**.

Annual Membership Fee

Annual membership dues are collected as follows:

LGGMC Annual Membership Dues 2025		
\$15.00	Individual	Age 18 and over
\$25.00	Family	Parents + kids under age 18

Look Forward to Our Next Meeting (9 AM June 14, 2025 @ Lake George Charter School)

For a quick update – The June meeting has been cancelled.

Upcoming Events - Coming Earth Science Events, 2025, updated 5/30/2025---from Pete Modreski

Hello, friends and clubs/societies, I've finally put together a new updated list of coming geology-earth science-rock and mineral events, for the next several months, through September. Here it is, attached as a pdf document. There are a great many gem and mineral shows in Colorado, throughout the summer! Plus, I will paste in right here the info about the first several events, starting with the "Pikes Peak" Gem and Mineral Show in Colorado Springs.

I think (hope?) that I haven't omitted to list any important events that I should have included!

I'll hope to run into many of you at some of these events.

Pete Modreski

Fri.-Sat.-Sun., June 6-8, 61st annual Pikes Peak Gem and Mineral Show, Norris Penrose Event Center, 1045 Lower Gold Camp Road, Colorado Springs; sponsored by the Colorado Springs

Mineralogical Society. 10-6 Fri. & Sat., 10-4 Sun., admission \$5. This is always a great gem and mineral show, and always a good place to see local collectors' amazonite and smoky quartz finds. Dealers, special exhibits, silent auctions, door prizes, kids' mineral/fossil dig.

Events at Colorado School of Mines Geology Museum, Golden:

Fri. June 6, 6-9 p.m., Free First Friday Night at the Mines Museum; all are welcome! "Live music, cash bar, hands-on activities, after-hours fun for the whole family." The next Free First Friday will be on Aug. 1 (none in July, it's the 4th).

The next Free Mineral ID Days will be on Saturdays, June. 7, Aug. 2, and Nov. 15, 1-4 p.m.

Museum website:

<https://www.mines.edu/museumofearthscience/> .

Other information also on facebook at

<https://www.facebook.com/MinesMuseum>.

Sat.-Sun., Aug. 2-3, Mines Museum Summer Rock, Mineral, and Fossil Sale; 9-4 Saturday, 1-4 Sunday. Colorado School of Mines Museum, Golden.

June 12-16, Friends of Mineralogy, Colorado Chapter, is sponsoring a symposium, **Specimen Mines of the United States,** to be held on the Colorado School of Mines campus. There will be lectures; museum tours at DMNS; mineral specimen preparation demonstration at Collector's Edge; reception; field trip; micromineral session. Registration required, attendance limited at some events. For full information see: <https://friendsofmineralogycolorado.org/symposium/>.

Fri.-Sun., June 20-22, Victor Gem and Mineral Show, Victor, CO.

Thurs. June 26: Denver Museum of Nature and Science 2025 Earth Sciences Colloquium. All are welcome, in-person-only, 2–3 pm, Museum admission not required to attend. Enter through Staff/Volunteer entrance, 50' east of main visitor entrance, and let Security know you're attending the talk, they will direct you to the location. All are welcome to attend. [The full year's schedule was: <https://sites.google.com/view/dmns-earth-science-colloquium/home>.] One more Colloquium presentation left this season:

Thurs. June 26: Denver Museum of Nature and Science 2025 Earth Sciences Colloquium. All are welcome, in-person-only, 2–3 pm, Museum admission not required to attend. Enter through Staff/Volunteer entrance, 50' east of main visitor entrance, and let Security know you're attending the talk, they will direct you to the location. All are welcome to attend. [The full year's schedule was: <https://sites.google.com/view/dmns-earth-science-colloquium/home>.] One more Colloquium presentation left this season:

Thurs., June 26, Colorado is a geologist's candy store! by Peter Barkmann, Colorado School of Mines [in Ricketson Auditorium]

Thurs.-Sun., July 24-27, Fairplay Gem, Mineral & Jewelry Show, Fairplay, CO.

Fri.-Sun., Aug. 1-3, Creede Rock and Mineral Show, Creede, CO. In the underground Mining Museum/Community Center.

Sat.-Sun., Aug. 2-3, Mines Museum Summer Rock, Mineral, and Fossil Sale; 9-4 Saturday, 1-4 Sunday. Colorado School of Mines Museum, Golden.

Thurs.-Sun., Aug. 7-10, Buena Vista "Contin-Tail" Rock, Gem and Mineral Show, Buena Thurs.-Sun., Aug. 14-17, Woodland Park Rock, Gem and Jewelry Show, Woodland Park, CO.

Fri.-Sun., Aug. 15-17, Lake George Gem & Mineral Show, Lake George, CO. Sponsored by the Lake George Gem and Mineral Club.

Thurs.-Sun., Sept. 4-7, Denver Gem and Mineral Show, Westin Westminster Hotel, Westminster, CO. The "original", 57th annual, Denver Gem and Mineral Show, sponsored by 7 clubs belonging to the Greater Denver Area Gem and Mineral Council. Dealers, special exhibits, fluorescent room, speakers, club demonstrations, free rock & mineral identification. See <https://www.denvermineralshow.com>. Held in conjunction with the Hardrock Summit Gem, Mineral, Jewelry, and Fossil Show.

Sept. 4-7 + Sept. 4-12, Hardrock Summit Gem, Mineral, Jewelry, and Fossil Show, Westin Westminster Hotel, Westminster, CO. Dealers, exhibits, lectures; a part of the show is a wholesale-only trade show. Indoor show in the hotel, Sept. 4-7; outdoor show in tent pavilions, Sept. 4-12. See <https://hardrocksummit.com>.

Sept. 5-13, Colorado Mineral and Fossil Fall Show, Delta Hotels Denver, 10 E 120th Ave., Northglenn, CO. See RMGM Promotions, <https://www.coloradomineralandfossilshows.com>.

Sept. 5-14, Denver Mineral, Fossil, Gem and Jewelry Show, at the National Western Complex and Denver Coliseum, Denver, CO. See <https://denver.show>.

Thurs., Sept. 18, "Tarryall Valley: Gold, Glaciers, and Giants", by Mark Hanson. Colorado Scientific Society annual Past Presidents' Dinner, at the Mount Vernon Canyon Club, Golden, CO. All are welcome to attend; reservations will be required. Details forthcoming at

<http://www.coloradoscientificsociety.org>.

Mark Hanson is a geologist, historian, and author of the upcoming book Tarryall Gold: From Rush to Hush. He profiles the miners, mines, cabins, and their resulting patina on today's Tarryall Valley. A resident and owner of several patented gold claims, Mark peels back 160 years of rust and reforestation to reveal a time capsule showcasing yesterday's rush, and today's hush.

Sat.-Sun., Sept. 20-21, Grand Junction Gem & Mineral Club, Fall Rock Show; at Mesa County Fairgrounds, Grand Junction, CO. Please click [HERE](#) to access the Rocky Mountain Federation of Mineralogical Societies/ Grand Junction Convention & Show

Meet Our Neighbors

Here is a list of nearby gem, mineral, fossil, and geology club meetings that you may enjoy. Go to each club's website for more information.

Cañon City Geology Club

Meets on the 2nd Monday of the month at 6PM at United Methodist Church, Cañon City.

Pueblo Rockhounds

Meets on the 3rd Thursday of each month at 6:30PM at

Westminster Presb. Church, 10 University Circle, Pueblo

Columbine Gem & Mineral Society

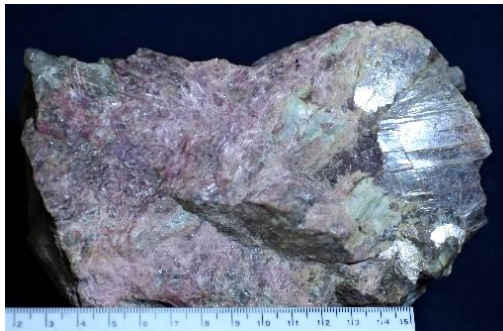
Meets on the 2nd Thursday of each month, 6:30PM at meeting room, Mt. Shavano Manor, 525 W. 16th, Salida

Colorado Springs Mineralogical Society

Meets on the 3rd Thursday of each month at 7PM Colorado Springs Christian School, 4855 Mallow Rd, Colorado Springs.

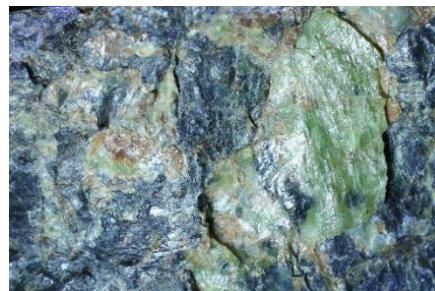
Mineral of the Month Quiz - Bob Carnein

Monthly Mineral for June, 2025 (Carnein photos and collection)



Like last month's mineral, the mineral for June is also a part of a group that includes several members that are hard to distinguish. This one is also a phyllosilicate (see below), but it occurs in pegmatite deposits, rather than in metamorphic rocks. In particular, it is found in a group known as LCT pegmatites (this is a hint, if you look it up), including 2 in Colorado where I collected 2 of these 3 specimens. One of its characteristics is that it is often lavender, thanks to the presence of manganese, though other colors are possible. It's an important source of a light element that's crucially important to the electric-car industry. Don't depend on color, but other useful physical properties include perfect pinacoidal cleavage, low H (2 ½ to 3 ½), and average SG (2.8 to 2.9). Monoclinic crystals are uncommon. Mindat lists over 30 Colorado localities for members of the group that this is a part of. What is this distinctive mineral?

Last Month's Mineral: Serpentine (antigorite), $Mg_3(Si_2O_5)(OH)_4$ is a common member of the serpentine-kaolinite group. Antigorite is the high temperature member, while lizardite and chrysotile form at temperatures below about 250C. Of these, chrysotile is the most economically important—most commercial asbestos is chrysotile. Canadian deposits were



once the major producers of asbestos, but, because of cancer concerns, most uses of asbestos have been curtailed in the U.S. Russia and Kazakhstan are still

major producers, with China and India being the biggest customers. Like the micas and clay minerals, serpentine is a phyllosilicate ("layered silicate") mineral, and this is reflected by its fair to good (but not perfect) cleavage. The low hardness and specific gravity are also typical of phyllosilicates in general, and other useful properties are color, luster, and mode of occurrence: in hydrothermally altered iron-and-magnesium-rich metamorphic and igneous rocks and, in large masses, along former tectonic-plate boundaries, where it makes up a part of ophiolite suites (ancient altered mantle rocks). Such rocks occur in Newfoundland, Quebec, and the northern Appalachians.

Interesting Reads

In this section, we provide unique submissions from our club members and fun rock, mineral, and geology news and information to enjoy from several of our favorite magazines.



Fordite: Motor City's Unexpected Gemstone

Once a byproduct of car factories, Fordite has become a prized, man-made gemstone full of vivid color and industrial history. No two pieces are the same; each one is a happy little accident worth celebrating.

[Read More](#)



Petoskey Stones: What Are They & How to Find Them

Petoskey stones are popular Lake Michigan beach finds. In rough natural form, they are a piece of Hexagonaria coral. Learn how they form and how to find them.

[Read More](#)



8 Rocks Found on Lake Michigan Beaches

Lake Michigan beaches are the nation's longest freshwater coast. With sand dunes and rocky cliffs, there's much to explore. Here are eight rocks commonly found on Michigan's beaches.

[Read More](#)



Yooperlites: What & Where to Find Them

Yooperlites are fluorescent sodalites found on the shores of the Great Lakes and are especially popular in the Upper Peninsula. Explore these glowing beauties.

[Read More](#)



Rockhounding Utah: Skyline Drive Minerals

Rockhounding Utah in the summer often involves heading for the Wasatch Mountains and Skyline Drive. Here are the metamorphic minerals you can find along the way.

[Read More](#)



Feldspar Minerals: Rock Forming Basics

Feldspar minerals are sometimes easy to forget since they are common rock-forming minerals, but this group of 20 closely related species deserves a closer look.

[Read More](#)



Mica: A Shimmering Sheet Mineral

Mica is noted for its shimmering appearance and flaky fracturing. It is not one mineral, but a group of sheet silicates known for their versatility and utility.

[Read More](#)



A Calcite Identification Guide

Calcite identification is important because it's found in many crystal forms, colors and is a popular collectible. Here's a helpful ID guide to get started.

[Read More](#)

Rock & Gem

THE EARTH'S TREASURES • MINERALS & JEWELRY

DIGITAL EDITION

Geodes Hidden Treasures



*Keokuk
Treasures
Explained*

Thundereggs Uncovered
Geode-Like Treasures

**How to Clean
& Crack Geodes**

**Las Choyas
Geodes 101**

**Oco Geodes:
Tiny But Mighty**

Look Inside for Exclusive Content!

Thundereggs Uncovered: Geode-Like Treasures

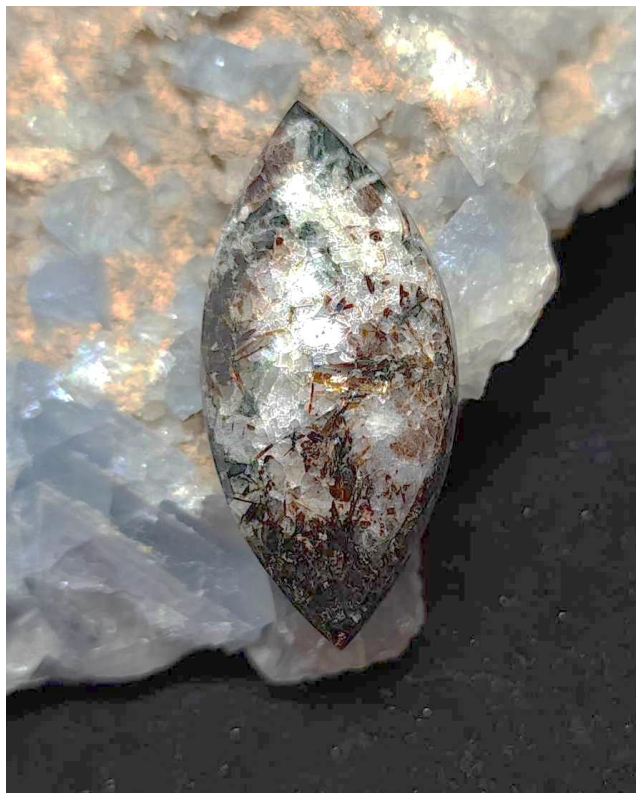
Keokuk Treasures Explained

How to Clean and Crack Geodes

Las Choyas Geodes 101

Oco Geodes: Tiny But Mighty

[READ NOW](#)



Astrophyllite: What to Cut

Astrophyllite, a rare starburst-patterned mineral, cuts and polishes beautifully for jewelry. Learn how to slab, cab and finish it for stunning results.

[Read More](#)



Alexandrite: The Chameleon Gemstone

Alexandrite is a variety of the mineral chrysoberyl. It is a chameleon gemstone exhibiting dramatic color-changing properties known as the "alexandrite effect."

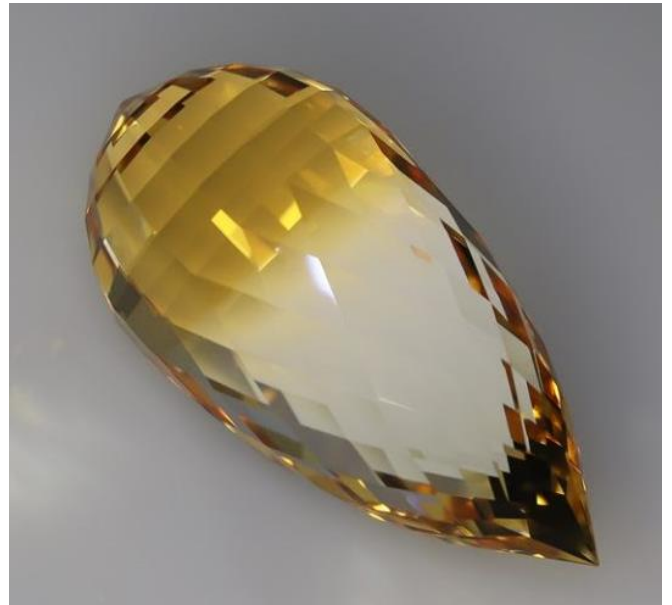
[Read More](#)



Finding Amazonite at Mineral Hill, PA

Amazonite, a light green potassium feldspar, can be found at Mineral Hill, Pennsylvania. Here's how to get there and where to find this beautiful mineral.

[Read More](#)



Faceting Focus: Briolette Acorn Design

Faceting a briolette gem has the same design as a regular gemstone; however, the pavilion is elongated, and the crown is domed. Explore this Acorn design.

[Read More](#)